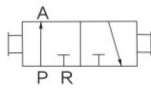
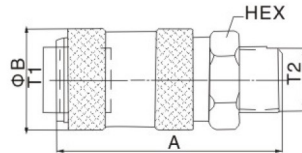


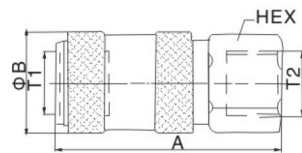
**标准规格**


型号	XCKG-11-NN XCKG-11-NW XCKG-11-WW	XCKG-22-NN XCKG-22-NW XCKG-22-WW	XCKG-33-NN XCKG-33-NW XCKG-33-WW	XCKG-44-NN XCKG-44-NW XCKG-44-WW	XCKG-66-NN XCKG-66-NW XCKG-66-WW	XCKG-88-NN XCKG-88-NW XCKG-88-WW
接管口径	1/8"PT	1/8"PT	3/8"PT	1/2"PT	3/4"PT	1"PT
操作方式	手控直式					
工作介质	空气 (径40 $\mu$ m) 以上滤网过滤					
工作温度	-20~70 $^{\circ}$ C					
工作压力	0~10kgf/cm $^2$					
最大耐压力	0~15kgf/cm $^2$					
位置数	3/2					
本身材质	铝合金(铜质可选)					

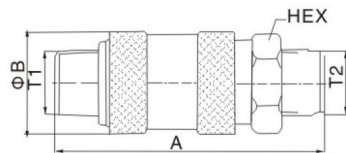
**符号**

**型号表示方法**

**外部规格**


型号	A	B	HEX	T1	T2
XCKG-11-NN	50	21	14	1/8"PT	1/8"PT
XCKG-22-NN	58.2	26	19	1/4"PT	1/4"PT
XCKG-33-NN	58.2	31	22	3/8"PT	3/8"PT
XCKG-44-NN	80	38	27	1/2"PT	1/2"PT
XCKG-66-NN	92	43	35	3/4"PT	3/4"PT
XCKG-88-NN	112	60	45	1"	1"



型号	A	B	HEX	T1	T2
XCKG-11-NW	45	21	14	1/8"PT	1/8"PT
XCKG-22-NW	58.2	26	19	1/4"PT	1/4"PT
XCKG-33-NW	28.2	31	22	3/8"PT	3/8"PT
XCKG-44-NW	74	38	27	1/2"PT	1/2"PT
XCKG-66-NW	81	43	35	3/4"PT	3/4"PT
XCKG-88-NW	104	60	45	1"	1"



型号	A	B	HEX	T1	T2
XCKG-11-WW	59	21	14	1/8"PT	1/8"PT
XCKG-22-WW	69.2	26	19	1/4"PT	1/4"PT
XCKG-33-WW	69.2	31	22	3/8"PT	3/8"PT
XCKG-44-WW	95	38	27	1/2"PT	1/2"PT
XCKG-66-WW	110	43	35	3/4"PT	3/4"PT
XCKG-88-WW	134	60	45	1"	1"